

Our construction and permitting processes

Driving investment in infrastructure to attract more business and development for the years to come

The process of finding an appropriate location for one of our stone wool manufacturing facilities is both rigorous and thorough. For our second expansion in the United States, we landed on Jefferson County, West Virginia. This site was chosen for several factors including its location, which enables efficient access to markets in the eastern United States where demand for our products is growing.

During the site selection process, we met with key stakeholders from Jefferson County Development Authority, the State of West Virginia and the City of Ranson. To formalize our site, we made a conditional agreement on the Jefferson Orchards location and the process concluded with a memorandum of understanding that was officially signed with county officials in September of 2017.



THE PERMIT PROCESS

The development project in Ranson requires three levels of permitting in accordance with local, state and federal laws and regulations.

Air Permit

As a manufacturing business in the United States, our production is governed by the U.S. Clean Air Act and other regulations, which have been designed to protect air quality. We obtained our Permit to Construct on April 30, 2018, confirming that our business will not have an adverse environmental impact. Once operations begin at the facility, we'll be required to demonstrate continued compliance with permit conditions through regular reporting to industry regulators.

Our West Virginia facility will use emissions-controlling equipment similar to what is used at our facility in Mississippi, which has successfully complied with all state and federal emissions standards since operation started in 2014.

Construction Permits

This includes three types of permits, beginning with the construction stormwater permit. Under the West Virginia National Pollutant Discharge Elimination System (NPDES) stormwater program, this requires operators of construction sites like ROCKWOOL to receive authorization to discharge stormwater during construction.

Our Site Works permit was obtained in November of 2017, allowing us to prepare the land for development.

Finally, there are building permits, including foundations, structural and a comprehensive building permit. These are managed by our contractors during construction.

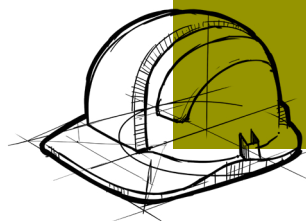
Environmental Permits

This category focuses on West Virginia Department of Environmental Protection (WVDEP) regulations, including those from the Division of Air Quality. The Multi-Sector Stormwater General Permit for Industrial Activities is one that we are working toward. It covers compliance with water quality safeguards that protect against stormwater pollution during operations.

The WVDEP, which is overseeing the issuance of our air permit, construction stormwater permit and NPDES permit, has created a dedicated landing page with information pertaining to the ROCKWOOL project. You can learn more by visiting dep.wv.gov/news/Pages/RockwoolInformation.aspx

"Based on all available information that we have gathered and that we have reviewed, we see no threat to the health of our citizens and no threat to our environment."

– Austin Caperton
WVDEP Cabinet Secretary,
following approval from WVDEP on
ROCKWOOL air permit



CONSTRUCTION

Construction is well underway for our new facility with production anticipated to start in fall 2020. The current project estimate includes approximately \$10 million spent on local construction activities and 250 full-time workers on site led by our general contractor.

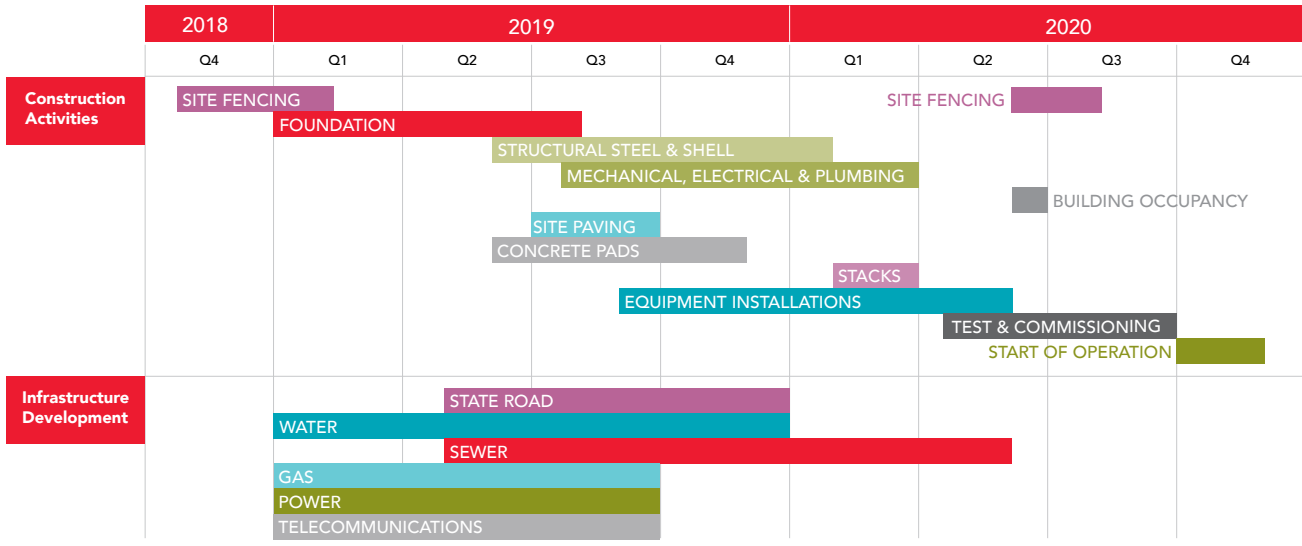
For the workers on site and for our surrounding neighbors, we are committed to ensuring a safe work environment. We require all contractor work to be performed on site in accordance with

ROCKWOOL standards, Occupational Safety and Health Administration (OSHA) standards, and the general contractor's rigorous safety processes. Our standards include a requirement for a dust control plan and to ensure that noise levels at our property line do not exceed 50 dB.

We are proud of the infrastructure upgrades that the project is bringing to Jefferson County. New water and sewer lines, a new state road and a natural gas pipeline extension from Martinsburg will help attract future business.

Construction and infrastructure development schedule

Schedule as of June, 2019*



* Visual representation of approximate timeline

FAQ's

Could this facility be built in Denmark?

Yes, the facility in West Virginia could be built in Denmark, both in terms of its proximity to schools and residential areas and its emissions limits. In fact, there are some requirements in the U.S. that are more stringent than in Denmark; for example, on sulphur dioxide. Where U.S. requirements are more stringent than Danish law, we comply with those stricter limits.

What are you doing to protect the environment during construction?

Our plans to protect the local environment consist of three components: a voluntary remediation program, a site-specific safety plan and a stormwater pollution prevention plan. Together, these practices ensure the safeguarding of both those on and off site.

ROCKWOOL has and will continue to be open and transparent about the construction of our new manufacturing facility in Ranson. We're following all local, state, and federal permitting requirements and regulations. Learn more by visiting: rockwool.com/wvconstruction

We also encourage you to keep up to date with the ROCKWOOL Ranson project by subscribing to our community newsletter at: rockwool.com/wvnewsletter